



Toward Usable Security Administration

Konstantin Beznosov

The University of British Columbia



Outline

- What's the problem?
- Why is usability of sec. admin. important?
- What are we doing?

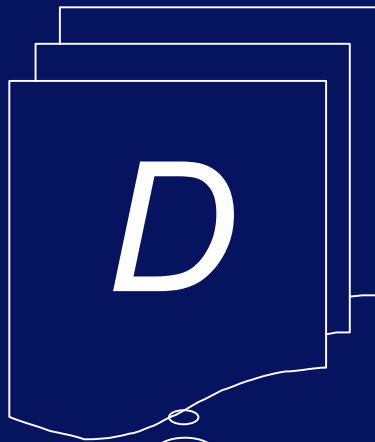


What's the problem?



Classical Access Control Solution

Domains



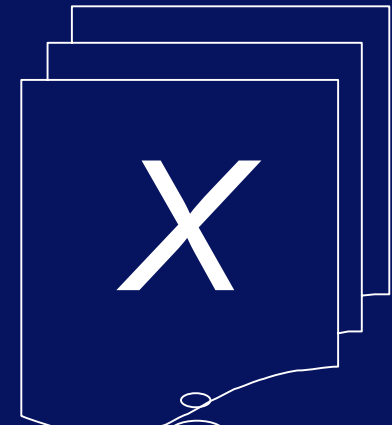
Have access to objects

Access Matrix

	Domain 1	Domain 2	Domain 3	File 1	File 2	Process 1
Domain 1	*owner control	*owner control	*call	*owner *read *write		
Domain 2			can	*read	write	wakeup
Domain 3			owner control	read	*owner	

A

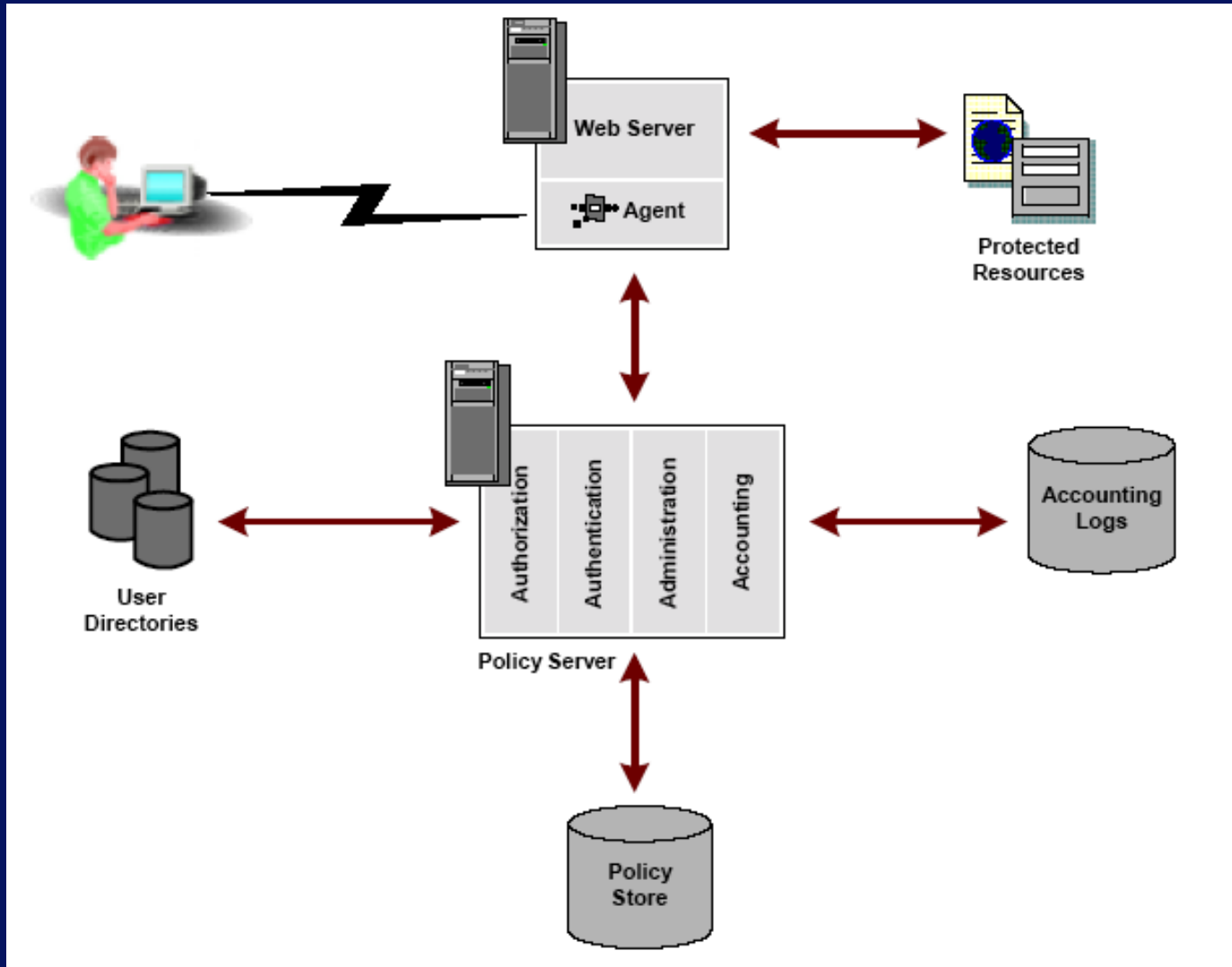
Objects



To be protected

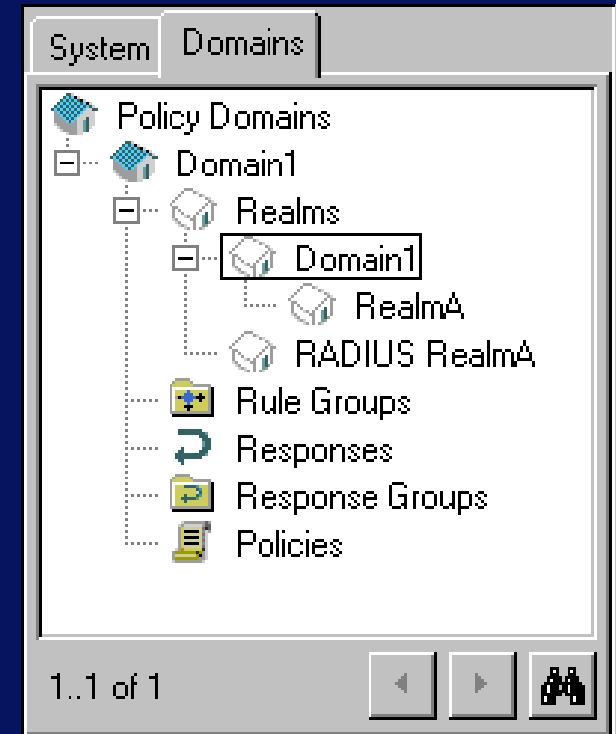
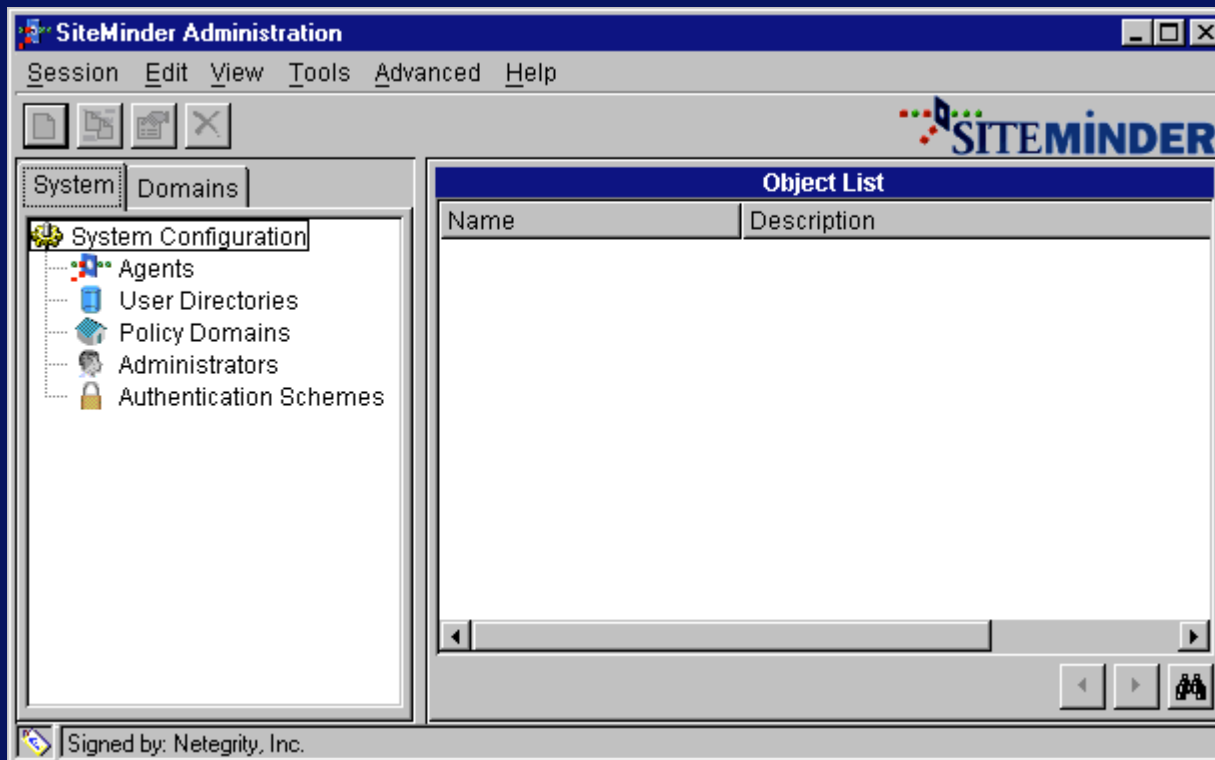


Enterprise-scale security server





Everything starts with simple directory tree like structure





Then continues with simple forms to fill out ...

The screenshot displays three overlapping SiteMinder configuration windows:

- SiteMinder Active Rule Editor**: The main background window showing a list of rules on the left and configuration options for a selected rule.
- SiteMinder Realm Dialog**: A dialog box titled "Realm Properties" with fields for *Name (MyRealm) and Description. It includes tabs for Resource, Session, and Advanced.
- SiteMinder Rule Dialog**: A dialog box titled "Rule Properties" with fields for *Name (DMS 0 Launch) and Description. It includes a "Realm and Resource" section with a dropdown for Realm (DMS 0 Launch) and a text field for Resource (*). The Effective Resource is shown as `gdemetrick(192.168.2.164)/servlet/MSR/Launch/*`. A checkbox for "Perform regular expression pattern matching" is checked.
- SiteMinder Authentication Scheme Dialog**: A dialog box titled "Authentication Scheme Properties" for "DMS 1 Admin". It includes fields for *Name (DMS 1 Admin) and Description (DMS Administration Authentication Scheme). Under "Scheme Common Setup", the Authentication Scheme Type is "HTML Form Template", Protection Level is 5, and "Password Policies Enabled" is checked. Under "Scheme Type Setup", *Server Name is "myserver.myorg.orgcom", "Use SSL Connection" is checked, and *Target is "/siteminderagent/forms/login.fcc".



... or select

Time Dialog [X]

Set Time Restriction [HELP]

Effective Starting Date
<now> [Select...]

Expiration Date
<never> [Select...]

Hourly Restrictions

	A.M.											Noon		P.M.												
	12	1	2	3	4	5	6	7	8	9	10	11	12	1	2	3	4	5	6	7	8	9	10	11		
Sunday	Fire	Fire	Fire	Fire	Fire	Fire	Fire	Fire	Fire	Fire	Fire	Fire	Fire	Fire	Fire	Fire	Fire	Fire	Fire	Fire	Fire	Fire	Fire	Fire	Always Fire	
Monday	Fire	Fire	Fire	Fire	Fire	Fire	Fire	Fire	Fire	Fire	Fire	Fire	Fire	Fire	Fire	Fire	Fire	Fire	Fire	Fire	Fire	Fire	Fire	Fire	Fire	Never Fire
Tuesday	Fire	Fire	Fire	Fire	Fire	Fire	Fire	Fire	Fire	Fire	Fire	Fire	Fire	Fire	Fire	Fire	Fire	Fire	Fire	Fire	Fire	Fire	Fire	Fire	Fire	Never Fire
Wednesday	Fire	Fire	Fire	Fire	Fire	Fire	Fire	Fire	Fire	Fire	Fire	Fire	Fire	Fire	Fire	Fire	Fire	Fire	Fire	Fire	Fire	Fire	Fire	Fire	Fire	Never Fire
Thursday	Fire	Fire	Fire	Fire	Fire	Fire	Fire	Fire	Fire	Fire	Fire	Fire	Fire	Fire	Fire	Fire	Fire	Fire	Fire	Fire	Fire	Fire	Fire	Fire	Fire	Never Fire
Friday	Fire	Fire	Fire	Fire	Fire	Fire	Fire	Fire	Fire	Fire	Fire	Fire	Fire	Fire	Fire	Fire	Fire	Fire	Fire	Fire	Fire	Fire	Fire	Fire	Fire	Never Fire
Saturday	Fire	Fire	Fire	Fire	Fire	Fire	Fire	Fire	Fire	Fire	Fire	Fire	Fire	Fire	Fire	Fire	Fire	Fire	Fire	Fire	Fire	Fire	Fire	Fire	Fire	Never Fire

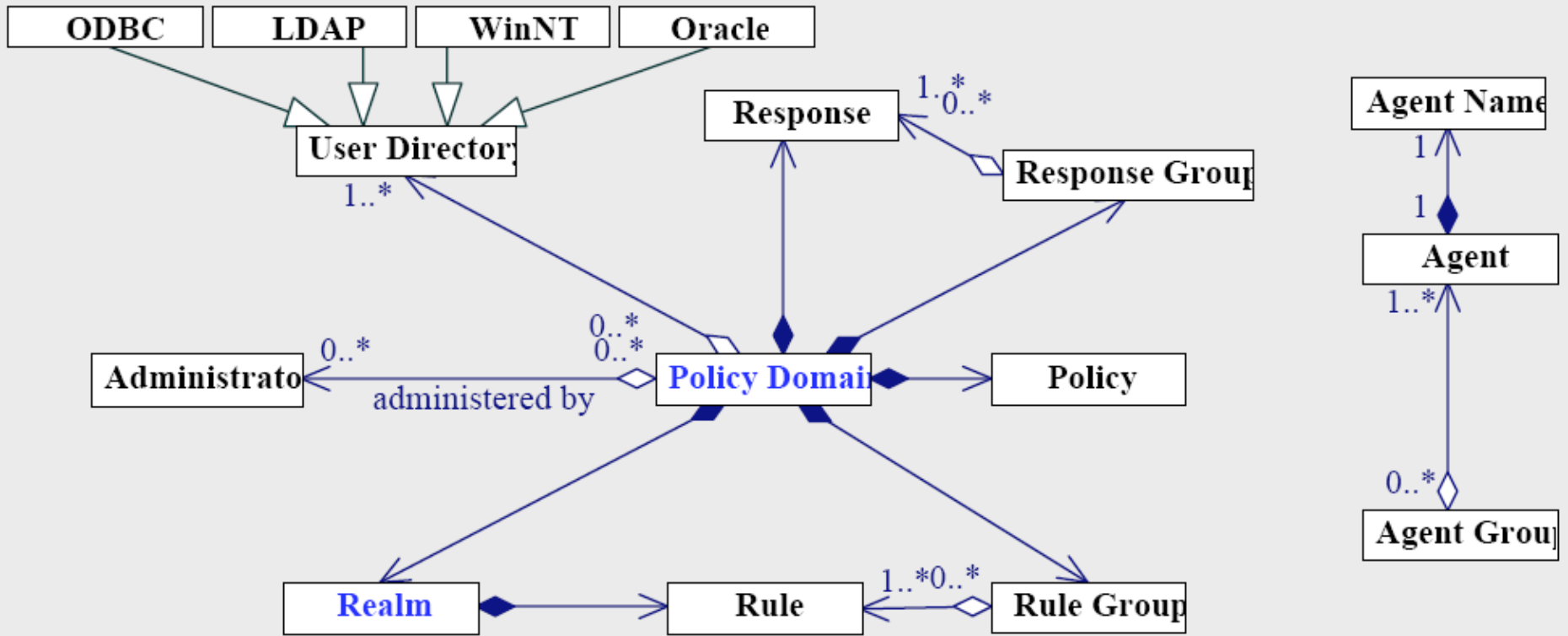
Rule Behavior
Fire
Don't Fire

[OK] [Cancel] [Reset]

Unsigned Java Applet Window

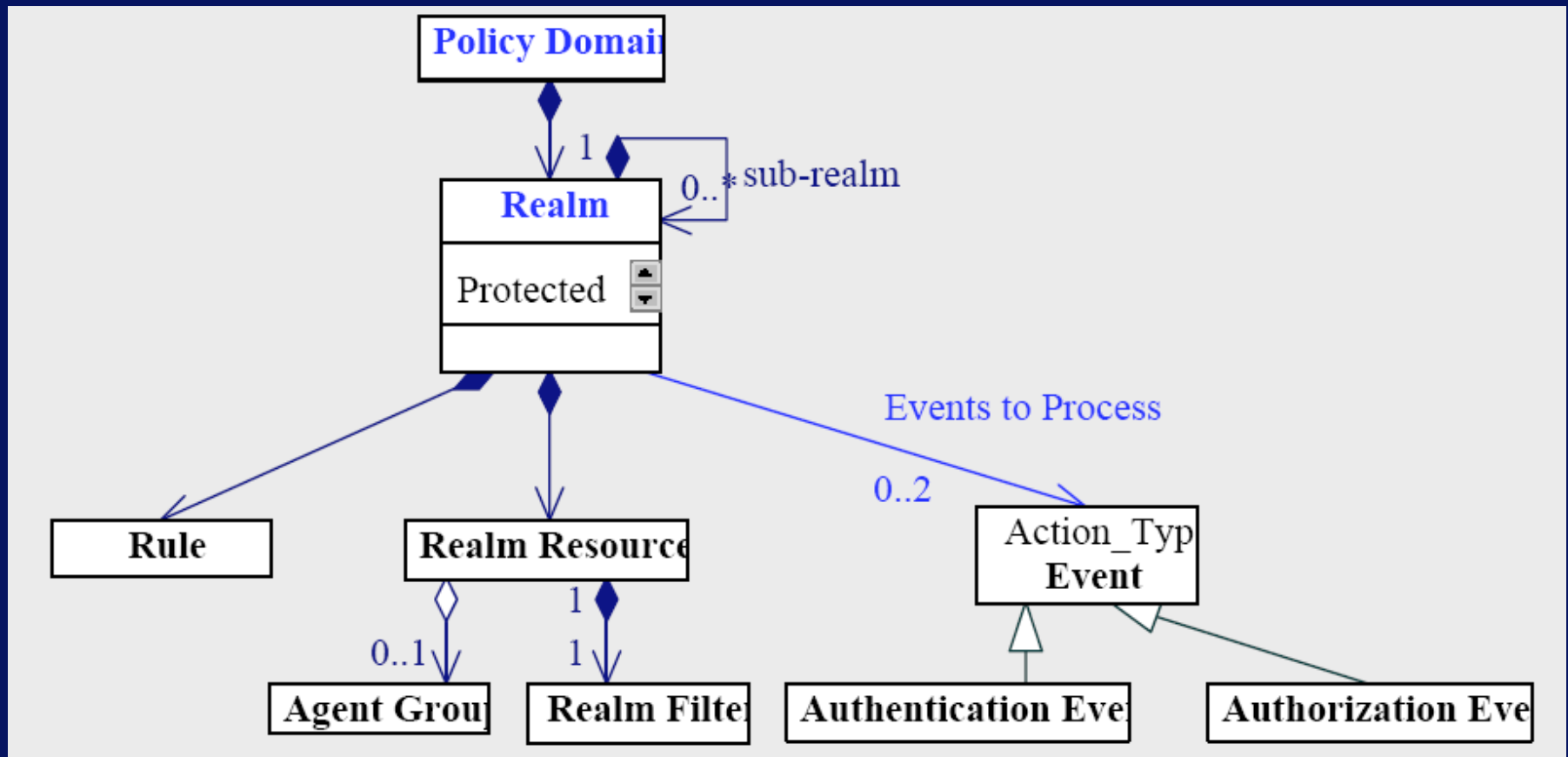


but the mental model is complex



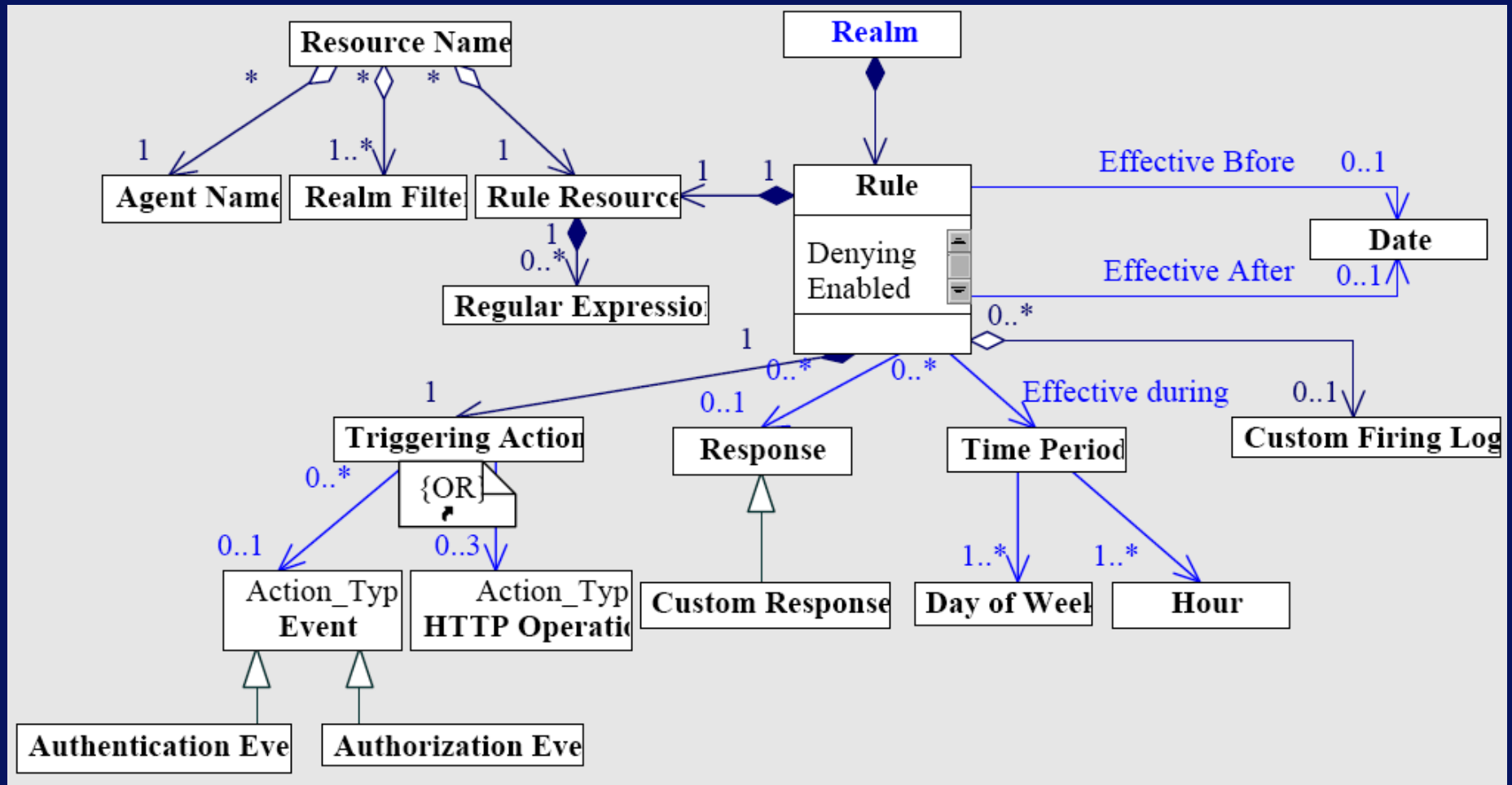


... and even more ...





... complex





so what?

- **Steep learning** curve
- **Hard to fit** real world into the model
- Easy to make **costly mistakes**
 - “friendly” DoS
 - inadvertent hard to catch vulnerabilities
- **Hard to test**
 - **Expensive** to test required scenarios
 - **No “what if” scenarios** to test before changing
 - Hard to perform **complete testing**
- Motivates users and admins to **circumvent security**



the take on the problem

- improving **visualization** of the information
 - existing cognitive models of security administration
- improving **feedback** to security administrators
 - "what if" **scenarios**
 - safe staging **playgrounds**
 - **testing** system state
- better **cognitive** models
- **mappings** between different mental models/abstractions
 - **application**-specific model oriented on business processes
 - **mechanism**-specific technical model



the team

(in alphabetical order)

- Dr. Konstantin Beznosov, security, SE
- Dr. Sidney Fels, HCI
- Dr. Brian Fisher, HCI
- Dr. Lee Iverson, HCI, SE



Summary

- Security administration tools are too complex → **unusable**
- Unusable sec. admin. is **expensive** and **error prone**.
- We'll improve **visualization**, **mental models**, and **feedback**.